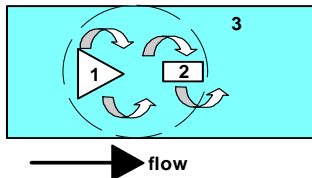


GENERAL CHARACTERISTICS

A narrow, triangular body (1) that goes through the entire cross-section of the meter tube creates a vortex when a flow is present (Kármán's vortex effect). The frequency of the vortex is proportional to flow and is detected by a piezo sensor (2) lying behind the triangular body. The entire unit, vortex body, and detector as designed as a module (3). They are inserted into the tube. The meter tube and the entire measuring unit can thus be separated from each other extremely quickly.



- * high accuracy
- * large overload security
- * no moving parts
- * fast installation and removal by clamp attachment
- * modular construction with the most versatile connection systems

Female thread G1/4 to G1 1/4 brass/stainless steel/plastic



CF-025GMM135UIS

TECHNICAL DATA

G	Type	PN bar	Qmax. recom. l/min H ₂ O	range l/min H ₂ O	H mm	L mm	X mm	SW mm
G 1/8	CF-006GM.	16	7	0.6 - 7 l/min	114	88	12.5	38
G 1/4	CF-008GM.	16	15	1.0 - 15 l/min	114	88	12.5	38
G 3/8	CF-010GM.	16	30	2.5 - 30 l/min	114	88	12.5	38
G 1/2	CF-015GM.	16	50	4.5 - 50 l/min	114	92	14.5	38
G 3/4	CF-020GM.	16	85	6.0 - 85 l/min	114	96	16.5	38
G 1	CF-025GM.	16	135	8.5 - 135 l/min	114	100	18.5	38
G 1 1/4	CF-032GM.	16	240	15 - 240 l/min	114	108	22.5	46

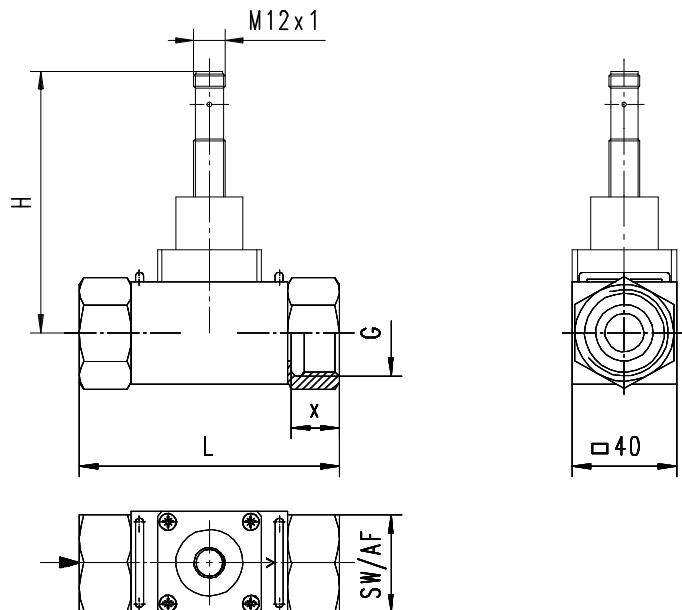
tolerance ±2% of measured value
 media temperature 5..80°C
 storage temperature -25..80°C
 cavitation not with P_{withdrawal} / P_{difference} 5.5
 average pressure loss 0.1 bar at Qmax.

OPERATION

The vortex flowmeter requires a feed distance of 5 - 10xD to achieve its nominal precision. If deposits are feared, the sensor should not be installed with the electronics pointing downward. Please observe that the sensor is installed in the direction of the flow arrow. For possible cleaning of the sensor, loosen the clamps and remove the device (in the process, the line should be depressurized. Make sure that the vortex does not expose the oscillating body to impacts (the spraying unit contains a very sensitive ceramic piezo transducer that can break).

MATERIALS

housing brass nickel plated, s.s.1.4571 or POM GF
 connectors brass nickel plated, s.s.1.4571 or POM
 detector ETFE PA6T6I 40%GF
 seal EPDM



ELECTRICAL DATA

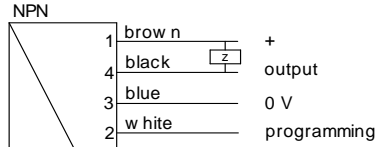
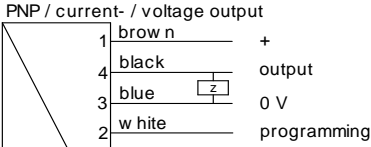
supply voltage 10..30 V DC
connection for locking plug M12x1, 4-pole
short-circuit proff yes
reverse polarity proff yes
protection class IP 67

current - / voltage output

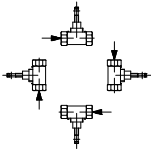
idle current 100 mA
output current 4..20 mA
voltage 0..10V

frequency output / programmable switch

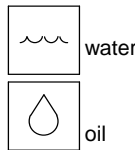
idle current < 20 mA (without load)
output PNP and NPN
10..2000 Hz



MOUNTING POSITION



METERING SUBSTANCES



At a viscosity of >1mm²/s (water), the response threshold rises since the vortex forms at a higher flow speed.

NOMENCLATURE

For combinations see table "technical data".

CF-	006	G	M	M	007	E	U	S	basic type specification
	006								● nominal diameter DN 006
	008								● nominal diameter DN 008
	010								● nominal diameter DN 010
	015								● nominal diameter DN 015
	020								● nominal diameter DN 020
	025								● nominal diameter DN 025
	032								● nominal diameter DN 032
		G							● female thread
		A							○ male thread
		T							○ nozzle
			M						● connection material brass Ms 58 nickel plated
			K						○ connection material stainless steel 1.4571
			P						○ connection material POM
				M					● housing material brass Ms 58 nickel plated
				K					● housing material stainless steel 1.4571
				P					○ housing material POM
					007				● range 0.6 - 7 l/min
					015				● range 1.0 - 15 l/min
					030				● range 2.5 - 30 l/min
					050				● range 4.5 - 50 l/min
					085				● range 6.0 - 85 l/min
					135				● range 8.5 - 135 l/min
					240				● range 15 - 240 l/min
						E			● seal EPDM
						V			○ seal Viton
						N			○ seal NBR
							U		● voltage output 0..10V
							I		● current output 4..20mA
							F		● frequency output
							S		● programmable switch (push pull PNP and NPN)
							E		● output at suburb electronics (e.g. omni-CF)
								S	● connection at locking plugs M12x1, 4-pole

COMBINATIONS

omni-CF

local electronic unit,
2xNPN and PNP switch
4(0)..20mA output
graphical LCD display with flashing LED
program ring



Flex-CF

switching and frequency exit
0..10V or 4..20mA
pnp, npn



All technical changes reserved

●BASIC Standard ○BASIC Programme option □VARIO Special option ⊕ PLUS Accessories ✗ not recommendable