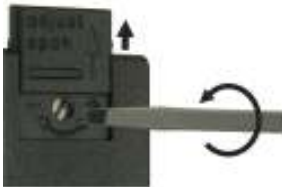


GENERAL CHARACTERISTICS

Instruments operate by a spring-supported paddel with magnetic triggering of a reed switch.

- * good repeatability
- * low pressure loss
- * dirt resistant
- * hermetic separation of electrical and hydraulic components
- * easy adjustment of switch



Female thread G3/8 to G2 brass/stainless steel



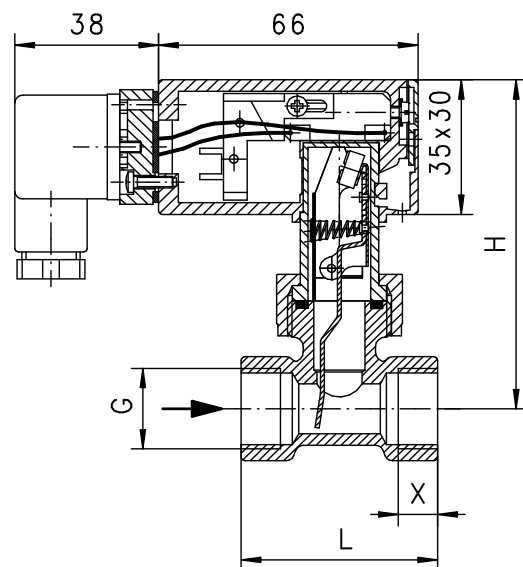
UR3K-015GM065

TECHNICAL DATA

| | G | Type | PN bar | Qmax.recom. l/min H ₂ O | adjustable range l/min H ₂ O | H mm | L mm | X mm | weight kg |
|-----------------|---------|---------------|--------|------------------------------------|---|------|------|------|-----------|
| brass | G 3/8 | UR3K-010GM050 | 25 | 10 | 3.5 - 5 | 87 | 50 | 10 | 0.35 |
| | G 1/2 | UR3K-015GM065 | 25 | 20 | 5 - 6.5 | 87 | 50 | 10 | 0.35 |
| | G 3/4 | UR3K-020GM085 | 25 | 40 | 6 - 8.5 | 88 | 50 | 12 | 0.35 |
| | G 1 | UR3K-025GM150 | 25 | 60 | 12 - 15 | 92 | 50 | 12 | 0.40 |
| | G 1 1/4 | UR3K-032GM270 | 25 | 80 | 20 - 27 | 96 | 50 | 12 | 0.55 |
| | G 1 1/2 | UR3K-040GM440 | 25 | 100 | 34 - 44 | 99 | 50 | 12 | 0.60 |
| | G 2 | UR3K-050GM690 | 25 | 150 | 54 - 69 | 108 | 50 | 12 | 1.00 |
| stainless steel | G 3/8 | UR3K-010GK050 | 25 | 10 | 3.5 - 5 | 87 | 50 | 10 | 0.40 |
| | G 1/2 | UR3K-015GK065 | 25 | 20 | 5 - 6.5 | 87 | 50 | 10 | 0.41 |
| | G 3/4 | UR3K-020GK085 | 25 | 40 | 6 - 8.5 | 88 | 50 | 12 | 0.35 |
| | G 1 | UR3K-025GK150 | 25 | 60 | 12 - 15 | 92 | 50 | 12 | 0.45 |
| | G 1 1/4 | UR3K-032GK270 | 25 | 80 | 20 - 27 | 96 | 50 | 12 | 0.55 |
| | G 1 1/2 | UR3K-040GK440 | 25 | 100 | 34 - 44 | 99 | 50 | 12 | 0.70 |
| | G 2 | UR3K-050GK690 | 25 | 150 | 54 - 69 | 108 | 50 | 12 | 1.00 |

Adjustable range is indicated for horizontally decreasing flow.

| | |
|-----------------------|---|
| tolerance | ±15% of full scale |
| media temperature | max. 110°C |
| average pressure loss | 0.01bar at Qmax. |
| hysteresis | depending on switch value minimum 0.7 l/min. |

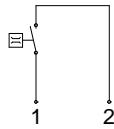


MATERIALS

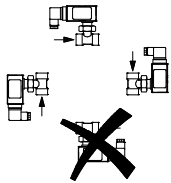
| | UR3K-...GM | UR3K-...GK |
|---------|------------------------------------|------------------------------------|
| housing | brass Ms58 nickel plated | stainless steel 1.4305 |
| body | brass Ms58 nickel plated | stainless steel 1.4571 |
| paddle | stainless steel 1.4301 ; 1.4571 | stainless steel 1.4301 ; 1.4571 |
| spring | stainless steel 1.4310 | stainless steel 1.4310 |
| magnet | oxyd 300 | oxyd 300 |
| seal | NBR | viton |

ELECTRICAL DATA

reed switch - wiring 0.372 n.o.
230 V AC 1A 50VA
plug DIN 43650-A
protection class 2
protection class IP 65



MOUNTING POSITION



Installation position may influence switch value.

METERING SUBSTANCES



water



gas/air



oil

NOMENCLATURE

For combinations see table "technical data"

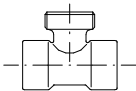
| UR3K- | 010 | G | M | 050 | | basic type |
|----------------|-----|---|---|-----|---|--|
| | 010 | | | | ● | specification |
| | 015 | | | | ● | DN 10 - G3/8 |
| | 020 | | | | ● | DN 15 - G1/2 |
| | 025 | | | | ● | DN 20 - G3/4 |
| | 032 | | | | ● | DN 25 - G1 |
| | 040 | | | | ● | DN 32 - G1 1/4 |
| | 050 | | | | ● | DN 40 - G1 1/2 |
| | | | | | ● | DN 50 - G2 |
| | | G | | | ● | female thread |
| | | | M | | ● | brass design |
| | | | K | | ● | stainless steel design |
| | | | | 050 | ● | 3.5 - 5 l/min |
| | | | | 065 | ● | 5 - 6.5 l/min |
| | | | | 085 | ● | 6 - 8.5 l/min |
| | | | | 150 | ● | 12 - 15 l/min |
| | | | | 270 | ● | 20 - 27 l/min |
| | | | | 440 | ● | 34 - 44 l/min |
| | | | | 690 | ● | 54 - 69 l/min |
| Special option | | | | | □ | setting / adjustable ranges for oil or gas |
| VARIO | | | | | | contact for locking plug M12x1, 4-pole |
| | | | | | | minimal flow range |

IMPORTANT FOR YOUR ORDER

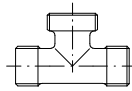
- Please indicate flow direction, metering substance and adjustable range with your order.
- With viscous liquids please indicate viscosity, temperature and metering substance (adjustable range on request)
- With gaseous media indicate pressure (relative or absolute), temperature and metering substance (adjustable range on request)

HONSBERG COMBINATION SYSTEM

connection types for UR3K



female thread
brass
stainless steel



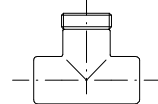
male thread
brass
POM



**welding, soldering
glue socket**
brass, stainless steel, PVC



solder fitting
copper



glue fitting
PVC

All technical changes reserved

●BASIC Standard ○BASIC Programme option □VARIO Special option ⊕ PLUS Accessories ✗not recommendable